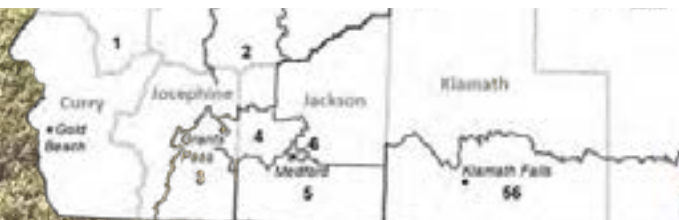
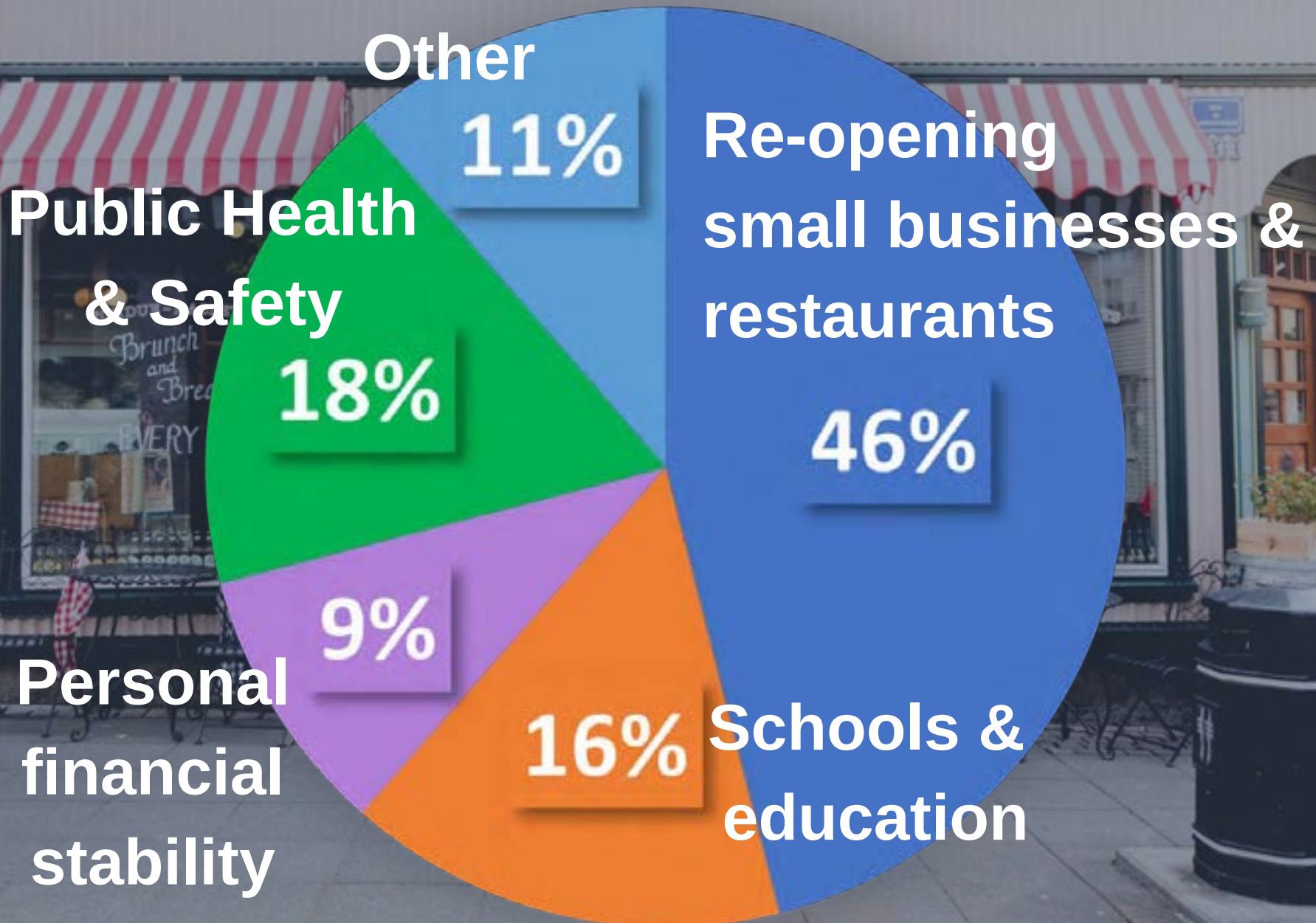


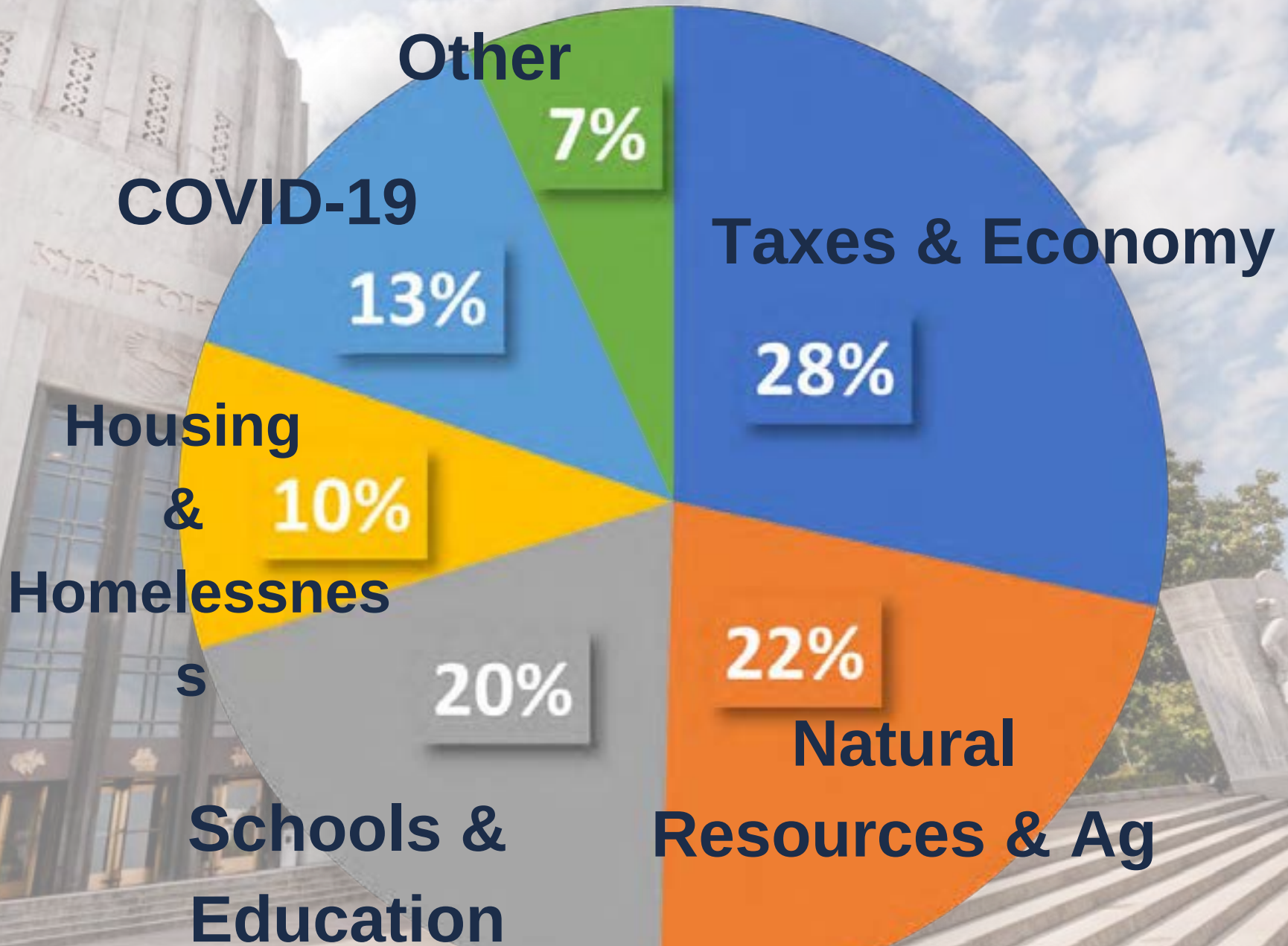
Oregon House District 60 Community Survey



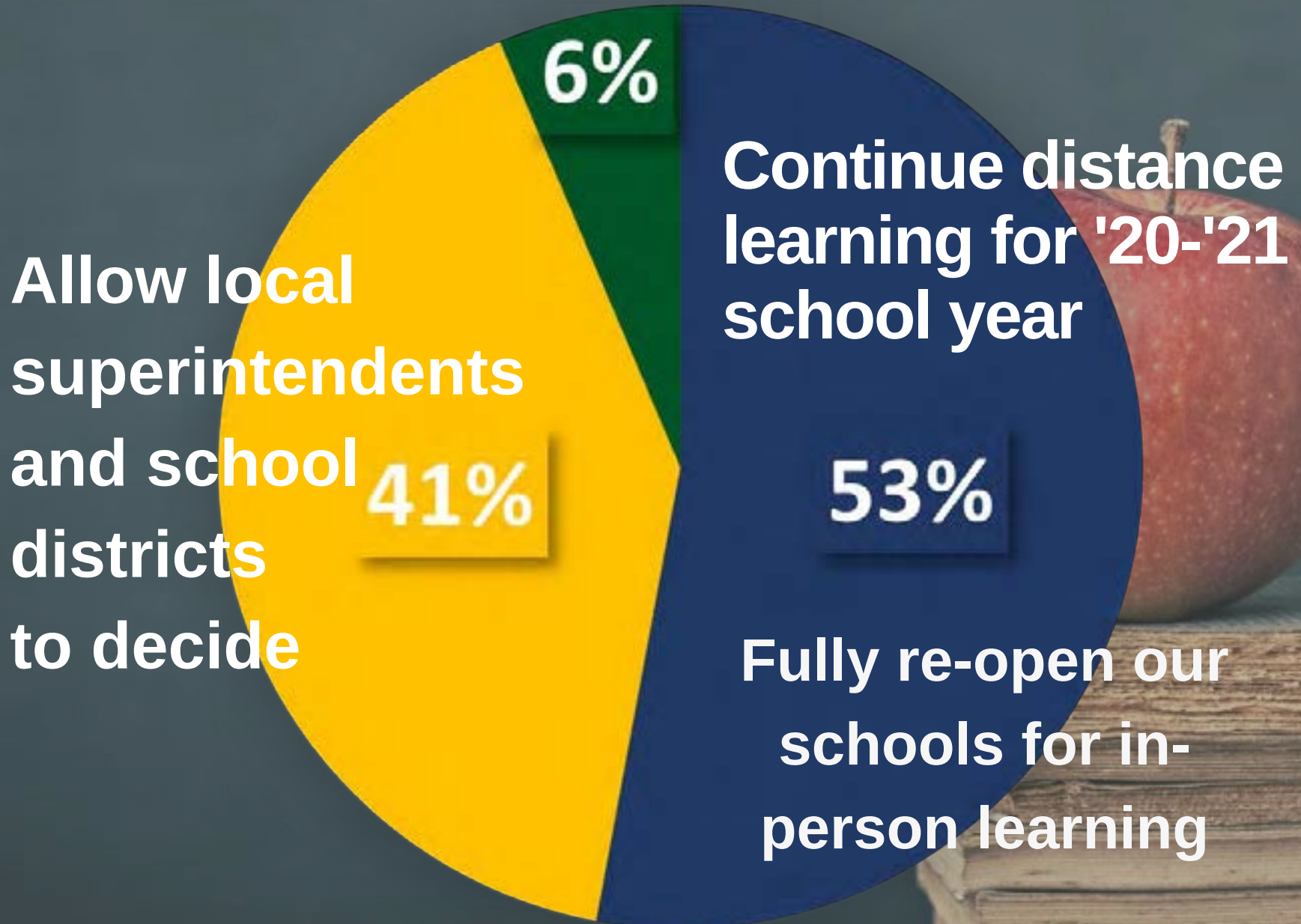
What is the most pressing issue for you in the upcoming year?



What policy areas are most important to you?



How should we handle schools and education during COVID-19?



Other issues you shared that matter to you

- **Mental and emotional health during lockdown**
- **Senior citizens, nursing homes**
- **Suicide rates among teens**
- **Climate change and the environment**
- **Taxes, taxes, and more taxes**
- **Unemployment, Employment Dept. failures**
- **Redistricting, fair elections**
- **OHA inconsistent reporting of COVID-19 #s**
- **Bipartisanship in the legislature**
- **PERS, government spending, state budget**
- **Gov. Brown's Executive Order overreach**

Thank you

Your opinion makes a difference in the decisions I make in the Legislature and allows me to better represent our district. Representing you is my highest priority.

Contact us any time:

Rep.MarkOwens@oregonlegislature.gov

or 503-986-1460

The Community Survey was conducted by postcard mail to some registered voting households in House District 60 on January 7, 2021. Results reflect 1,200 responses received between January and March 2021. This was not a scientific poll.